

DESIGN  
HILLS

MARBELLA

DOLCE & GABBANA







Designed by Dolce&Gabbana, in collaboration with Sierra Blanca Estates, Design Hills invites you into a world where luxury intertwines with tranquility. The embodiment of an era when pleasure reigned supreme, honouring the reverence for exquisite craftsmanship. Design Hills Dolce&Gabbana Marbella is an exclusive enclave of a meticulously curated collection of hospitality and residential creations, devoted to the art of living well.

**SB** SIERRA BLANCA  
ESTATES / DOLCE & GABBANA





# MARBELLA AND THE GOLDEN MILE

Design Hills Dolce&Gabbana, an enchanting addition to the exclusive Costa del Sol. Reviving the illustrious “Golden Mile” of Marbella, it offers contemporary international elegance and unrivalled luxury in residential properties, services and lifestyle.

The Marbella Golden Mile began its journey in 1954, when Prince Alfonso de Hohenlohe started building the iconic Marbella Club Hotel. It was inaugurated in 1976. This became the pinnacle of Marbella’s elite at the time, with many celebrities and royalty spending their vacations here. This area rose in popularity, and in turn, the development of surrounding area began. The prestige lives on over 60 years later, as some of the world’s rich and famous have homes here. With Design Hills Dolce&Gabbana, this fabled locale reaches new heights of luxury, redefining ultra-luxury living.



Nestled on a picturesque hill, rising approximately 600 metres above the sea level, Design Hill Dolce&Gabbana Marbella commands an extraordinary location in the heart of the Golden Mile, the renowned hub for social and cultural activities. This vantage point offers a slight elevation compared to the surrounding area, providing a unique and breathtaking 360° view to La Concha.

This harmonious blend of architectural brilliance and the awe-inspiring beauty of nature bestows upon residents an exceptional place to savour life's most magical moments, inviting them to bask in a world of unparalleled luxury and serenity.

# ELEVATED LIVING AT ITS FINEST







# DOLCE&GABBANA CRAFTING EXCELLENCE

Established in 1984 by Domenico Dolce and Stefano Gabbana, Dolce&Gabbana has become a formidable presence in the fashion and luxury goods industries, synonymous with a relentless pursuit of excellence.

Expanding beyond fashion, Dolce&Gabbana underscores its commitment to preserving and promoting Italian artistry and elegance. From Alta Moda to Alta Gioielleria, the brand remains dedicated to upholding its legacy as a champion of excellence, transcending traditional boundaries and embodying the essence of Italian craftsmanship and cultural heritage across a spectrum of disciplines.







INSPIRING  
**LIVING**

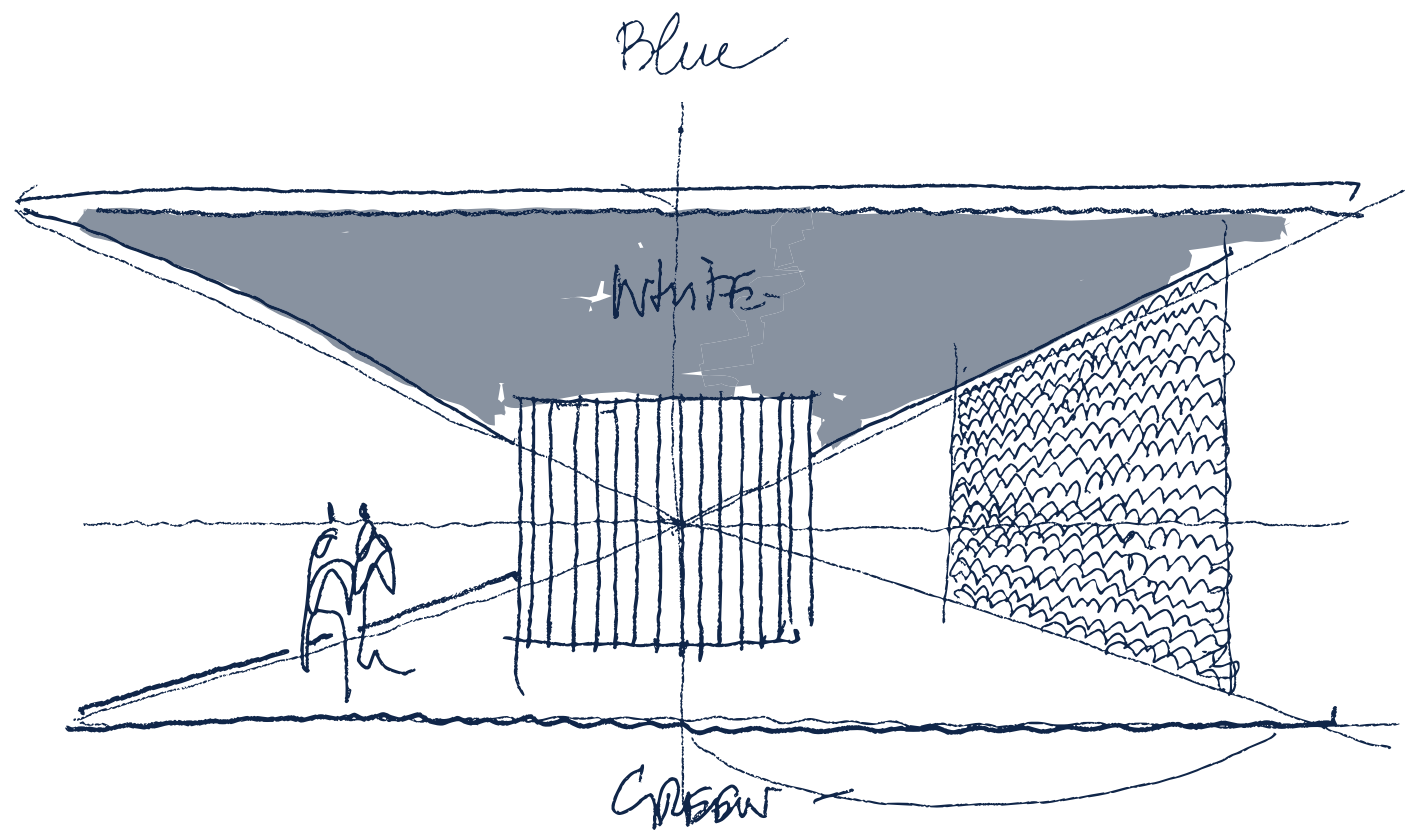
# SIERRA BLANCA ESTATES

Sierra Blanca Estates works every day with the firm commitment to take our activity, and our clients, one step further at the forefront of the luxury residential sector.

Committed to creating the best possible residential projects in terms of quality, location, innovation, profitability and sustainability. At Sierra Blanca Estates we want to be the architects of a transformative vision based on the real and incomparable experience of acquiring, living and enjoying a home, which is in itself the expression of an extraordinary way of life.







<sup>15</sup> DESIGN  
PHILOSOPHY

<sup>33</sup> THE  
PROJECT

<sup>87</sup> SERVICES/  
AMENITIES



The concept of luxury is not static  
but shapes and changes according  
to the rhythms of society.

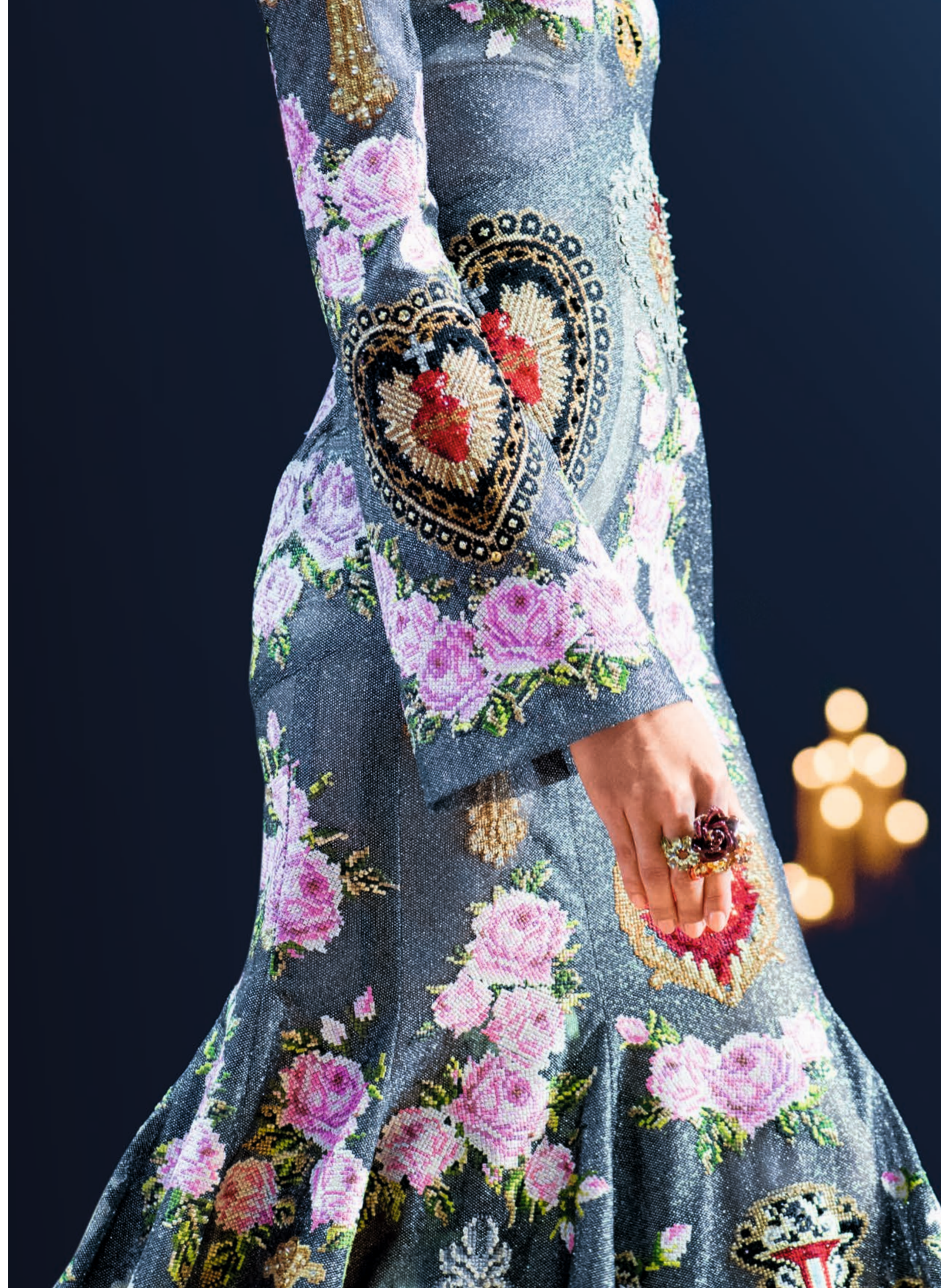
# DESIGN PHILOSOPHY



# VISIONARY CRAFTSMANSHIP FATTO A MANO

Dolce&Gabbana is dedicated to championing the pinnacle of Italian 'Fatto a Mano' craftsmanship on a global scale. Collaborating with Sierra Blanca, the brand is crafting meticulously designed, lifestyle-centric hospitality and real estate offerings. The objective is to elevate craftsmanship to its zenith within the real estate sector.

Enter Design Hills—a multifaceted development encompassing high-end residential units. This exclusive housing venture brims with unique intricacies, each meticulously curated to epitomize the brand's core values.





# ECHOES OF NATURE

Its Mediterranean landscape highlights how each hue is meticulously chosen to reflect the essence of Dolce&Gabbana's Italian heritage. Pristine whites adorn the architectural details, while vibrant nature greens infuse the interiors with vitality, mirroring the surrounding landscape. Serene blues, reminiscent of the sky and sea, cascade through the spaces, imbuing them with a sense of serenity.

GARDEN TERRACE







CERAMICS IN FOCUS







FROM HORIZONS TO OCEANS







## NATURE'S TAPESTRY







# GEOMETRY IN MOTION

Rooted in the principles of rationalist architecture, the interior design showcases expansive windows and openings that accentuate the spaciousness and lightness of the living areas.

The sleek and refined composition emerges from the dynamic arrangement of architectural elements, resulting in a fluid layout that seamlessly delineates distinct functions through elegant geometric forms and captivating perspectives.



# DISTINCTIVE DECORATIVE DESIGN

Drawing inspiration from the refined principles of Italian modernism, the interior design of these prestigious residences exude elegance and sophistication. Embracing a contemporary reinterpretation of rationalist architecture, the design ethos prioritizes clean, well-defined spaces that seamlessly blend functionality with aesthetics. Characterized by a harmonious interplay of distinct volumes and fluid partitions, each element is meticulously curated to foster an immersive connection with the breathtaking panoramic views of the sea and surrounding natural landscape.





# SOPHISTICATED VISUALS AND SENSORIAL EXPERIENCE

Residing in these residences offers an immersive experience akin to living within a sophisticated work of art, where architecture and landscape harmoniously merge into a dynamic living environment. A visual and sensorial symphony unfolds with each passing day.





With precision akin to Dolce&Gabbana's craftsmanship,  
the project technical blueprint lays the foundation,  
showcasing architectural elegance and modern ingenuity,  
inspiring a vision of unparalleled excellence.

# THE PROJECT/





# CULTIVATING COMMUNITY

The renowned Golden Mile—an address synonymous with exclusivity and luxury. Here, amidst the convergence of the world’s leading luxury brands, Design Hills Dolce&Gabbana Marbella redefines ultra-luxury living with its super-prime residences and unrivalled amenities.

Residents and guests are treated to tranquility and privacy while enjoying seamless access to prestigious schools, cutting-edge health facilities, world-class golf courses, Michelin-starred restaurants, and haute couture boutiques.



**DG NAPOLI**  
BLOCK FIVE

**DG COMO**  
BLOCK FOUR

**DG FIRENZE**  
BLOCK THREE

**DG PALERMO**  
BLOCK TWO

**DG VENEZIA**  
BLOCK ONE

ARTS CENTRE AND SPA

WELLNESS & FITNESS  
AND SPORTS CENTRE

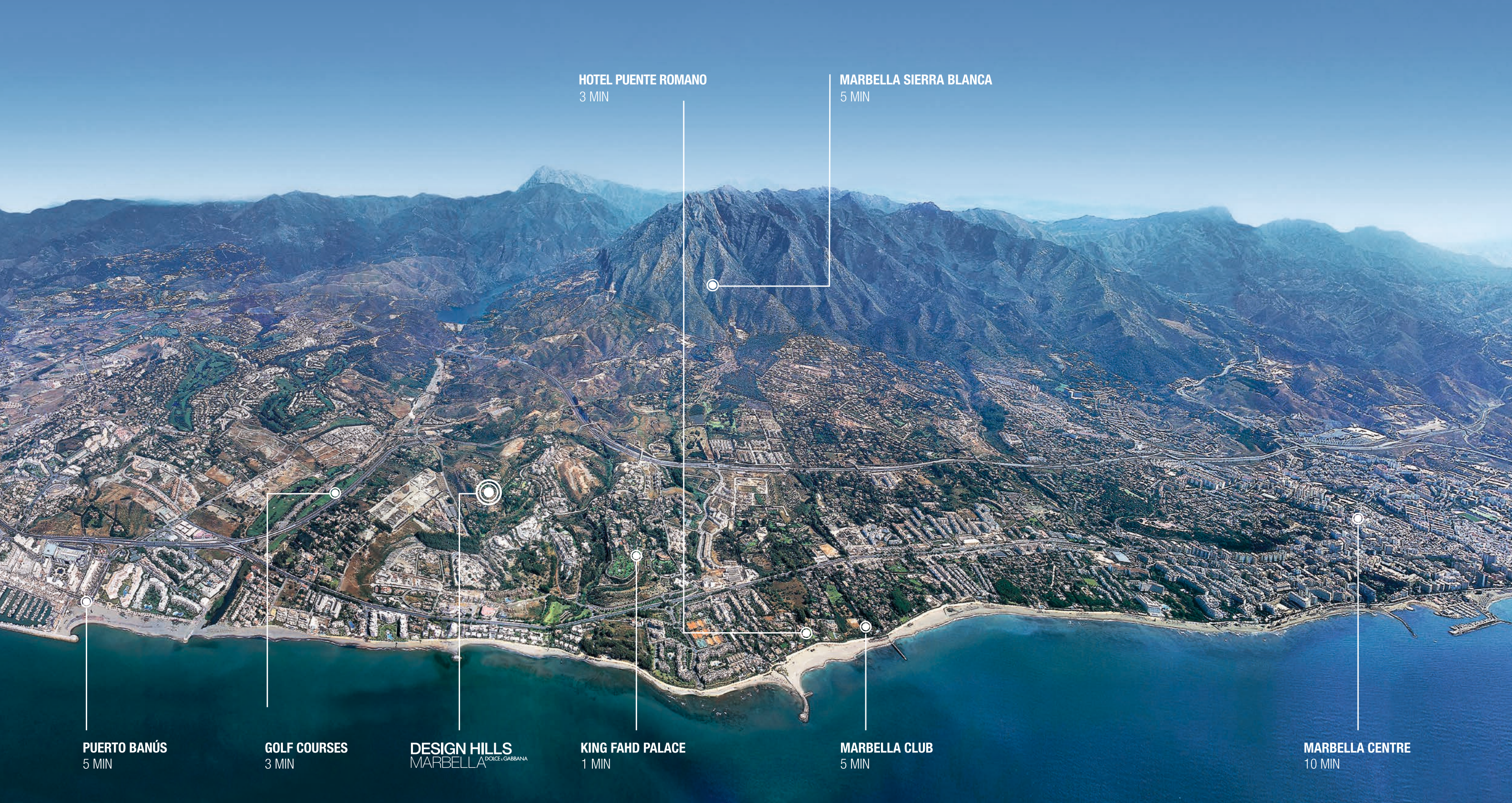
POOL CLUB

RETAIL DRIVE

CLUB AND RESTAURANT







**PUERTO BANÚS**  
5 MIN

**GOLF COURSES**  
3 MIN

**DESIGN HILLS**  
MARBELLA DOLCE & GABBANA

**KING FAHD PALACE**  
1 MIN

**MARBELLA CLUB**  
5 MIN

**MARBELLA CENTRE**  
10 MIN

Puerto Banús (5 min)  
Puente Romano Hotel (3 min)  
Marbella Club (5 min)  
Marbella Centre (10 min)

Marbella Sierra Blanca (5 min)  
Golf Courses (3 min)  
King Fahd Palace (1 min)  
Beach (2 min)

International schools (3 min)  
Tennis courts (3 min)  
Hospitals and medical heliport (3 min)  
Restaurants and leisure areas (1 min)

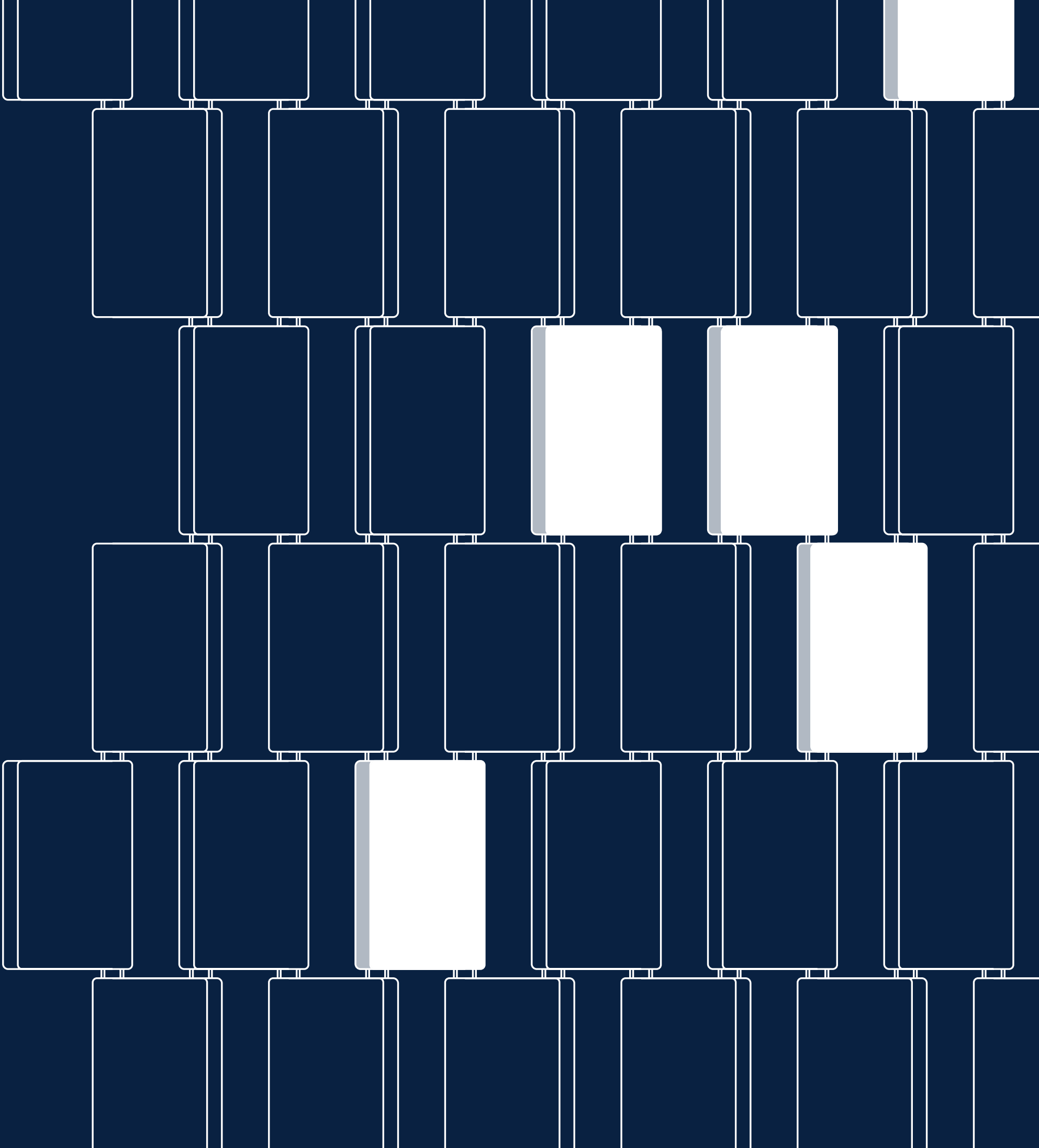
Shopping areas (5 min)  
Art galleries and interior design studios (5 min)  
Málaga City (45 min)  
Pablo Picasso International Airport (40 min)



# ARCHITECTURAL FRONTIERS

Adorning the façade of Marbella Hills, the decorative design pays homage to the rich cultural heritage of Andalusia while seamlessly intertwining with the contemporary vision of Dolce&Gabbana. The building facades exude pristine elegance, with white surfaces, glass parapets, and sunfilled terraces.

Unique ‘mojarabie’ porcelain modules, a nod to the designers’ style, filter sunlight, adding bespoke luxury. Meticulously crafted rooftops offer super terraces with private pools, blending opulence and comfort seamlessly.











# EXPANDING HORIZONS

Perched majestically above Puente Romano, Design Hills Dolce&Gabbana Marbella offers more than luxury, it offers a lifestyle elevated to new heights. With panoramic views of Marbella's coastline and the Mediterranean Sea, each sunset becomes a breathtaking spectacle.





# OUTDOOR AREA

Panoramic ocean views and intimate social spaces, embodying a lifestyle of opulence, well-being, and enjoyment.

















# PRIVATE APARTMENTS

Designed with spacious open floor plans, these residences provide an inviting environment where interior spaces seamlessly flow into one another.





































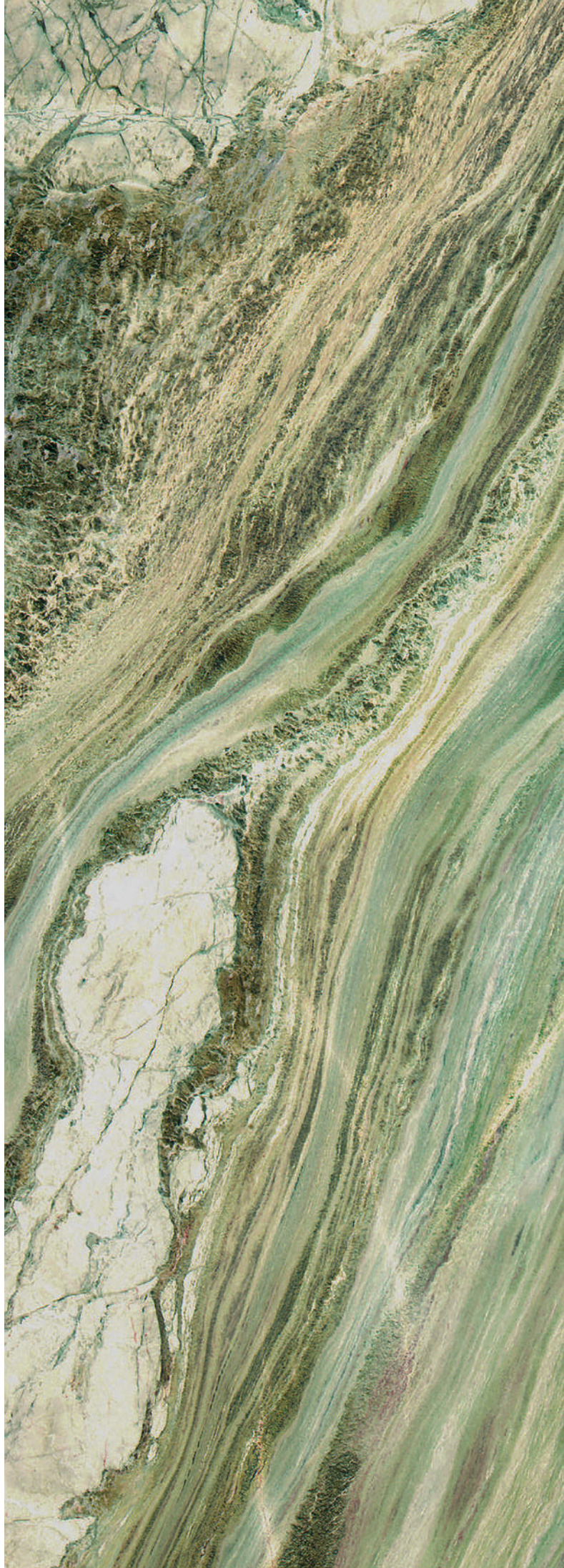
















# ENTRANCE HALLS

The design concept of the Design Hills residential complex is inspired by the unmistakable elegance ingrained in Dolce&Gabbana's DNA and the vibrant colours typical of the nature surrounding Marbella.

These elements are reflected not only in the external common areas but also in the entrance halls of the residential buildings.

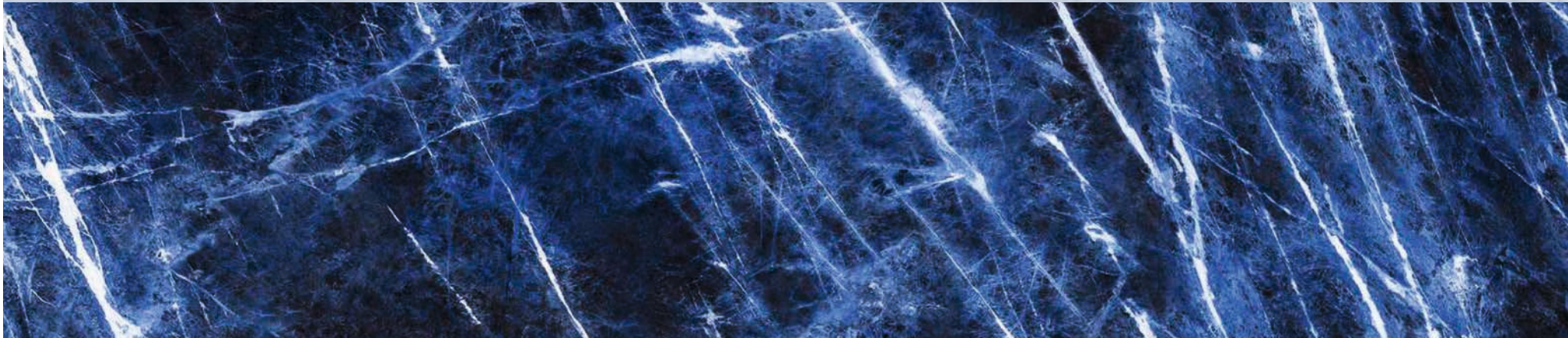


AZUL CIELO



Azul Cielo marble, originating from Brazil, boasts a light blue hue adorned with white intrusions reminiscent of clouds in the sky. Its distinctive colour, coupled with its resilience and crystalline composition, bestows upon it an undeniable quality, adding a relaxed yet refined ambiance.

BLUE SODALITE



The striking allure of Brazilian Blue Sodalite is attributed to its distinct shades of blue, ranging from cobalt to ultramarine, rendering it both rare and sophisticated. Its resemblance to the deep, intense blues of the sea adds to its allure.

GUATEMALA GREEN



Guatemala Green is a prized Indian marble characterized by its unprecedented shades transitioning from emerald to black, complemented by distinctive light veins that traverse it, reminiscent of the abundant vegetation of the surrounding hills.

TERRA MATER



Terra Mater, sourced from Turkey, has been chosen for its warm hues and earthy tones. With its striking veined structure, it adds a unique and incomparable touch to any indoor space. Moreover, its transparency makes it ideal for backlit interior features.

WHITE PANDA



Panda White marble, with its soft veins, forms compelling geometric arrangements that enliven the pure white backdrop with hints of black. Considered a natural masterpiece, it achieves a harmonious balance through the interplay of contrasting vein colours.



At Design Hills Marbella, the focus is on creating an unparalleled living experience with a range of services and amenities that cater every need.

# SERVICES/ AMENITIES









# POOL CLUB

The breathtaking infinity pools, blending with the horizon for an unforgettable visual experience. Designed to captivate, its serene ambiance offers residents a sanctuary of unmatched sophistication.





## BAR AND RESTAURANTS

Design Hills Dolce&Gabbana Marbella is synonymous with culinary excellence, hosting a variety of upscale dining venues and cafes within its lavish complex.













SPORT AND  
WELLNESS









RETAIL  
DRIVE





# FEATURES AND PREMIER AMENITIES

## ENTRANCE AND LOBBY

- Security 24hrs at the gate
- Valet parking service
- Concierge desk 24hrs
- Lifestyle VIP Concierge services
- Hostess, hospitality and lifestyle host
- Indoor and outdoor lounge area (lobby)

## RESIDENCES

- Designed with curated furnishings by Dolce&Gabbana
- Fully furnished 1 to 5 bedroom residences
- Suite and rooms apartments
- Penthouse apartment
- Rental apartments
- Private and semi-private lifts

## FEATURES

- Residences supplied by Dolce&Gabbana
- Custom furniture designed by Dolce&Gabbana
- Master bedrooms with walk-in closets and private bathroom for her and for him overlooking the sea
- Beauty room for massages and makeup
- Grand Living Room opening to private outdoor spaces overlooking the sea
- Roof terraces with swimming pools and solariums
- Service room for staff
- Entertainment rooms
- Private studio
- House phones and interface technology for concierge and services



# AMENITIES

## SPORT

- Indoor and outdoor padel court
- Fully equipped fitness centre
- Outdoor wood gym
- Box ring (adults and children)
- Golf simulator and mini golf
- Outdoor basketball court
- Indoor and outdoor yoga and pilates
- Indoor football court, artificial grass 5x5 players (unique in Marbella)

## WELLNESS

- Meditation room
- Signature spa (hamman, sauna, Nordic sauna, etc)
- Massage centre
- Water therapy area (hot, cold and ice)

## BEAUTY

- Hairdresser and beauty centre
- Barber shop

# CHILDREN

- Indoor and outdoor cinema (parents and kids)
- Kids camp for birthdays, cooking and handcraft-making areas, playground, schools for workshops
- Indoor and outdoor kids club

# RESIDENTS PRIVATE CLUB

- Events room and outdoor terrace
- Private room for small celebrations up de 20 pax
- Fully equipped conference room
- Private offices
- Work and meetings space
- Library area
- Bar drinks and snacks
- Pool and chess tables
- Wine and cigar cellar

# POOL CLUB

- Main Infinite outdoor pool adults only with panoramic views
- Cabanas and sunbed area
- Lounge terrace
- Main pool bar and restaurant
- Indoor heated swimming pool
- Outdoor swimming pool (adults and children)
- Sunbeds area
- Children pool area
- Italian gelato mini truck

# RETAIL DRIVE

## FOOD & BEVERAGE

- Italian and Nikkei signature restaurants
- International, Spanish oriented all-day restaurant
- Coffee shop vegan, gluten free and organic options

## RETAIL SHOPS

## GOURMET SHOP & FRENCH BAKERY

## MINI MARKET

# PETS

- Dog walker
- Fenced pet ground
- Pet shop and grooming



# THE TEAM

## The One Atelier / **METROGRAMMA** MILANO

**The One Atelier** is leader of the industry in the development of exclusive branded real estate and exceptional private homes, overseeing the entire process from idea generation to handover. Many of the globe's leading luxury lifestyle and fashion brands have chosen The One Atelier to design and deliver truly exceptional properties around the world. The partnership with Metrogramma, an architecture studio based in Milan founded by Andrea Boschetti allows the design of projects at all scales: from masterplan to architecture to the most luxurious and exclusive interiors. The One Atelier/Metrogramma is the general designer and coordinator of Design Hills Dolce&Gabbana Marbella developed by Sierra Blanca Estates.

## **FRESH** / **ROUSSEAU** ARCHITECTURES DAPELO

**FRESH Architectures** was founded in 2007 in Paris by Julien Rousseau, Ulysses Gnesda and Luca Battaglia. They built an agency that did not take scale into account: from small to large, from interior design to town planning, from high fashion to city neighbourhood, they tackle projects based on their dynamic rather than their size. Julien Rousseau, the managing partner, took part in the RT 2020 working group on Temperature Regulation and is a co-author of a report on the sustainable city. In 2021, together with Giovanna Dapelo, he founded the interior design agency «Rousseau Dapelo». Fresh Architectures is the Facade Envelop Design consultant of the Design Hills Dolce&Gabbana, developed by Sierra Blanca Estates.

## **STORAGE**MILANO

**StorageMilano** is an architecture and design firm founded in Milan in 2002 by Barbara Ghidoni, Marco Donati and Michele Pasini. The company operates in various areas of design from the construction of architectural ideas to installations. StorageMilano has since its beginning initiated a stimulating encounter with the most innovative interpreters of Italian fashion, designing fashion shows, showrooms, events, buildings, headquarters, and private homes. The approach is based on the research of new aesthetics and spatial solutions with a particular accent on materials and shapes. StorageMilano is the interior design consultant of the Design Hills Dolce&Gabbana, developed by Sierra Blanca Estates.



